

The Down River Report Graphs

For Optimal Hyperlink Performance, Download PDF Report to your Computer

Two Week SNOTEL Plots by State of

Two Week SNOTEL and USGS Plots by Basin of Percent of Average

Precipitation with Trend Line, SWE with Trend Line and 'Select Rivers' Flow with Trendline

Average Streamflow Index with Trendline (associated base layer and hyperlinks),
Temperatures (Min, Average with Trendline, Max), Precipitation and SWE with Trendline

Colorado SWE trend 2.36"/day & temp trend -0.26F/day

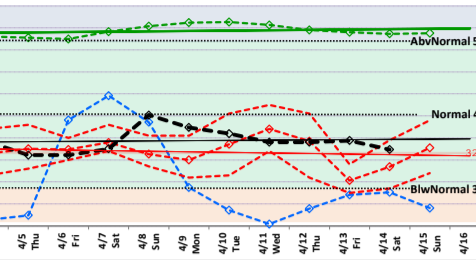
$$y = 2.36x + 1,219.25$$

$$y = -0.26x + 35.996$$

$$R^2 = 0.10$$

$$R^2 = 0.036$$

Colorado
114 Snotel Sites@10188'



Arizona SWE trend -0.81"/day & temp trend -0.34F/day

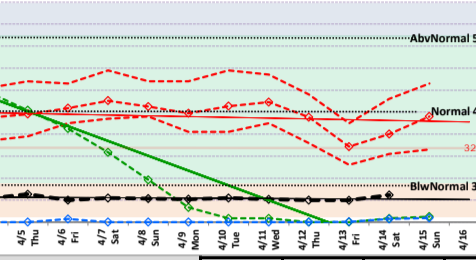
$$y = -0.81x + 10.08$$

$$y = -0.34x + 51.110$$

$$R^2 = 0.90$$

$$R^2 = 0.082$$

Arizona
39 Snotel Sites@8104'



Idaho SWE trend 3.21"/day & temp trend 0.39F/day

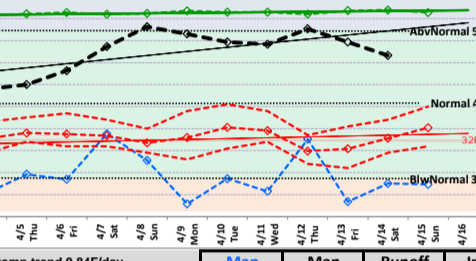
$$y = 3.21x + 1,636.75$$

$$y = 0.39x + 31.587$$

$$R^2 = 0.68$$

$$R^2 = 0.139$$

Idaho
82 Snotel Sites@7111'



Montana SWE trend 16.89"/day & temp trend 0.84F/day

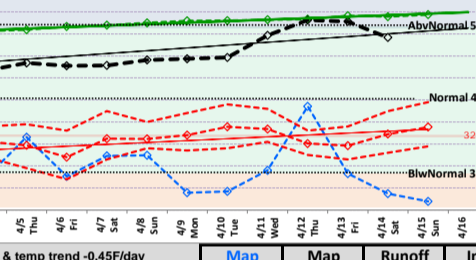
$$y = 16.89x + 1,975.71$$

$$y = 0.84x + 23.928$$

$$R^2 = 0.97$$

$$R^2 = 0.4931$$

Montana
90 Snotel Sites@7373'



New Mexico SWE trend -1.35"/day & temp trend -0.45F/day

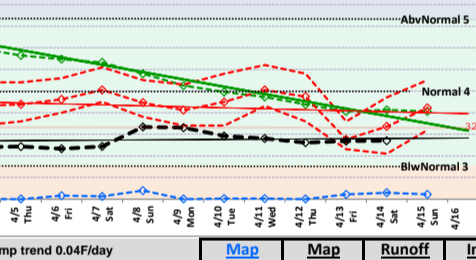
$$y = -1.35x + 34.34$$

$$y = -0.45x + 46.710$$

$$R^2 = 0.97$$

$$R^2 = 0.119$$

New Mexico
27 Snotel Sites



Oregon SWE trend -8.79"/day & temp trend 0.04F/day

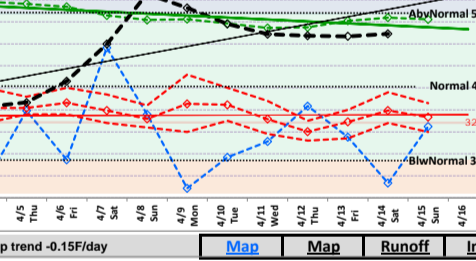
$$y = -8.79x + 907.02$$

$$y = 0.04x + 37.119$$

$$R^2 = 0.72$$

$$R^2 = 0.002$$

Oregon
81 Snotel Sites



Utah SWE trend -21.06"/day & temp trend -0.15F/day

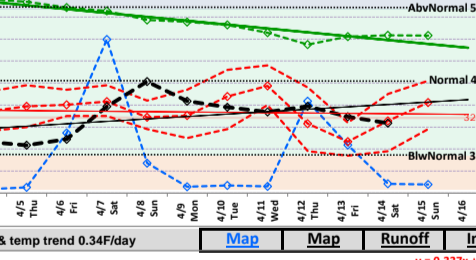
$$y = -21.06x + 1,129.42$$

$$y = -0.15x + 38.250$$

$$R^2 = 0.93$$

$$R^2 = 0.011$$

Utah
128 Snotel Sites



Washington SWE trend 4.24"/day & temp trend 0.34F/day

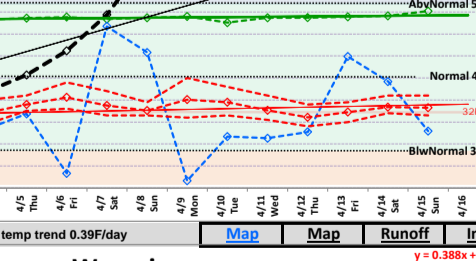
$$y = 4.24x + 2,286.58$$

$$y = 0.34x + 32.632$$

$$R^2 = 0.30$$

$$R^2 = 0.162$$

Washington



Wyoming SWE trend 10.03"/day & temp trend 0.39F/day

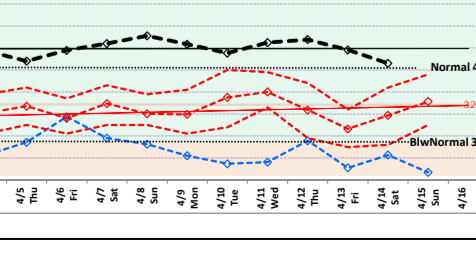
$$y = 10.03x + 1,524.64$$

$$y = 0.39x + 27.581$$

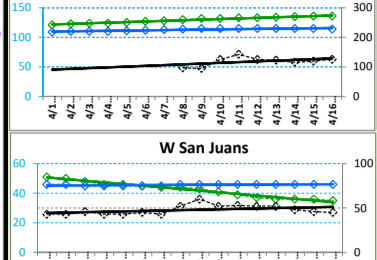
$$R^2 = 0.76$$

$$R^2 = 0.097$$

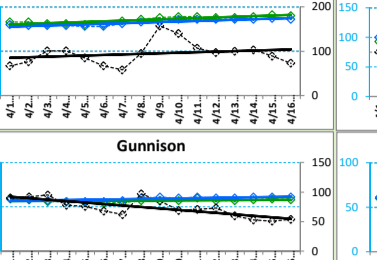
Wyoming



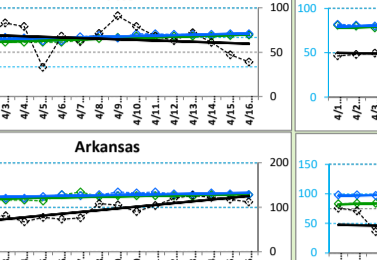
Green, Upper



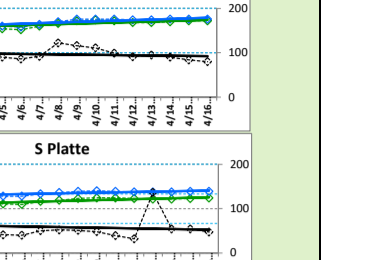
Yampa and White



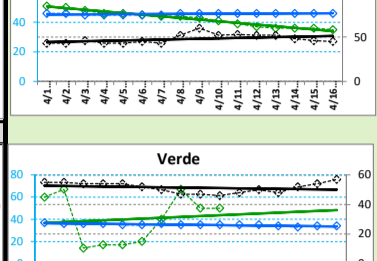
N Platte



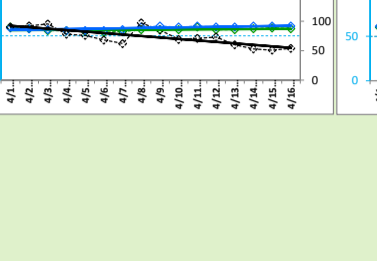
Colorado



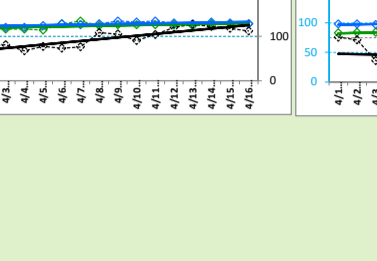
W San Juans



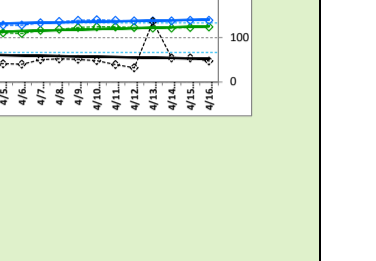
Gunnison



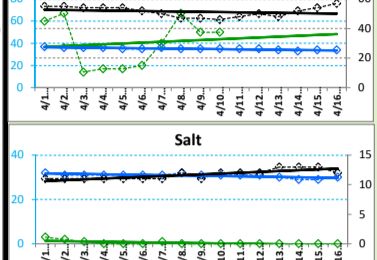
Arkansas



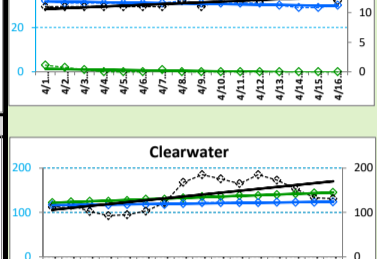
S Platte



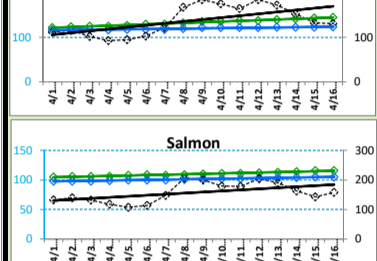
Verde



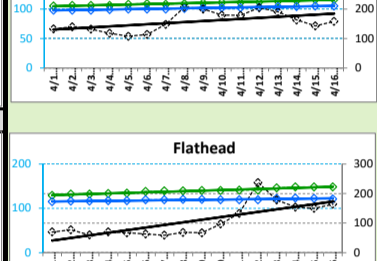
Salt



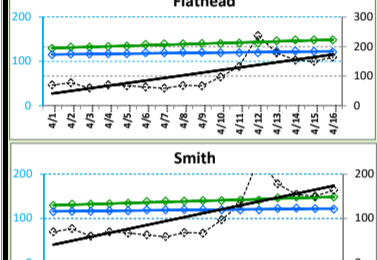
Clearwater



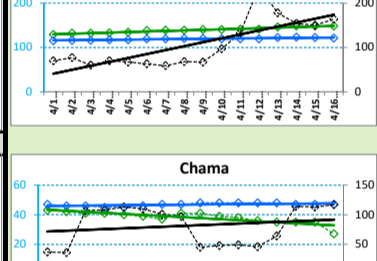
Salmon



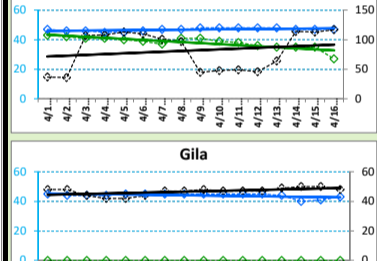
Flathead



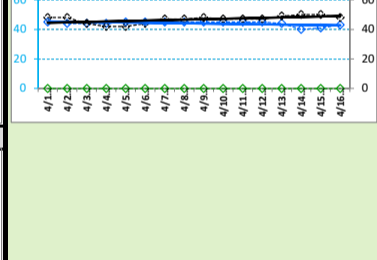
Smith



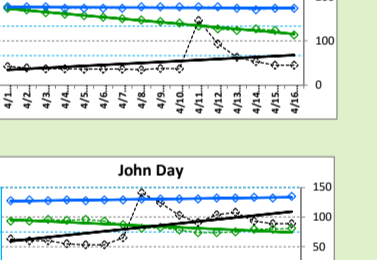
Chama



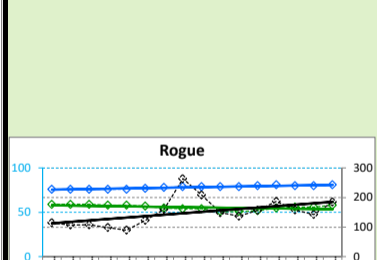
Gila



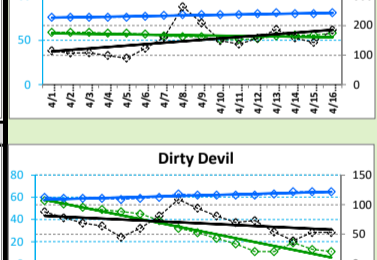
Rio Grande



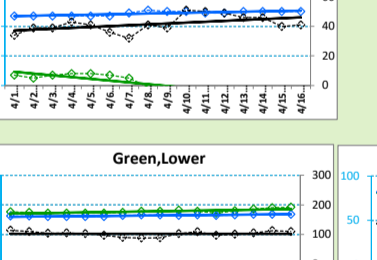
John Day



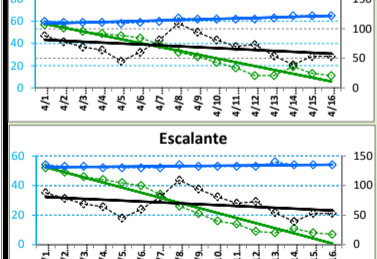
Rogue



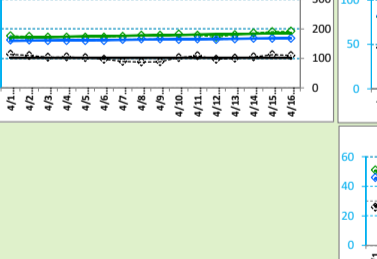
Owyhee



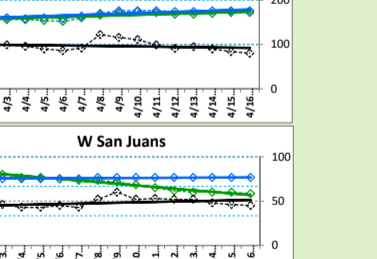
Dirty Devil



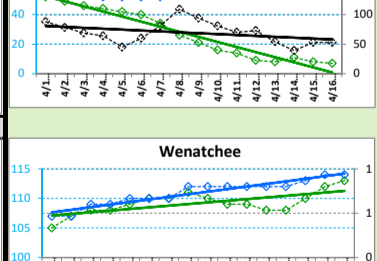
Green, Lower



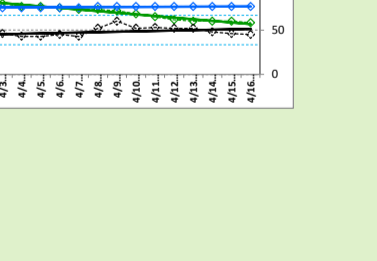
Colorado



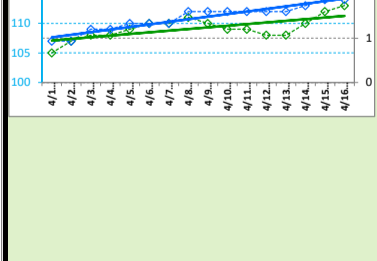
Escalante



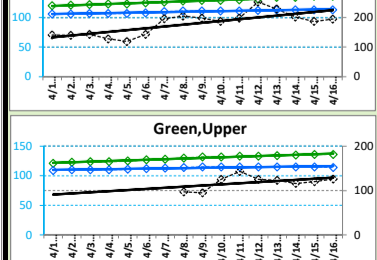
W San Juans



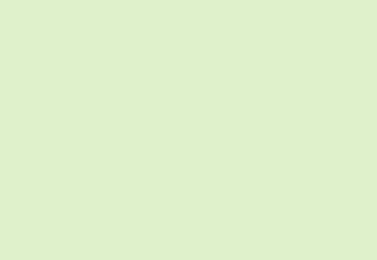
Wenatchee



Snake



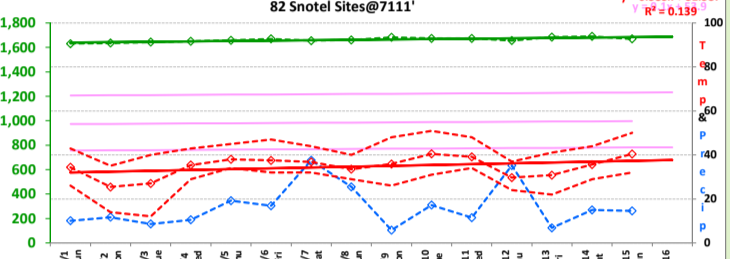
Green, Upper



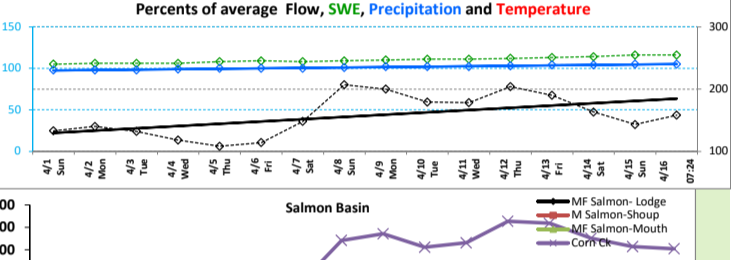
EXPERIMENTAL (magenta data fabricated)

Temperatures (Min, Average with Trendline, Max), Temperatures (Average Min, Average, Max)
Precipitation and SWE with Trendline

Idaho
82 Snotel Sites@7111'



Percents of average Flow, SWE, Precipitation and Temperature



Salmon Basin

